



# El Paso Streetcar Project



## PROJECT OVERVIEW AND EARLY CONSTRUCTION PROGRESS



# EP Streetcar Project Partnerships

## Funding, ENV, Jurisdiction

- Preliminary Engineering, ENV, Jurisdiction
- Final Design and Construction Management
- Operations and Maintenance



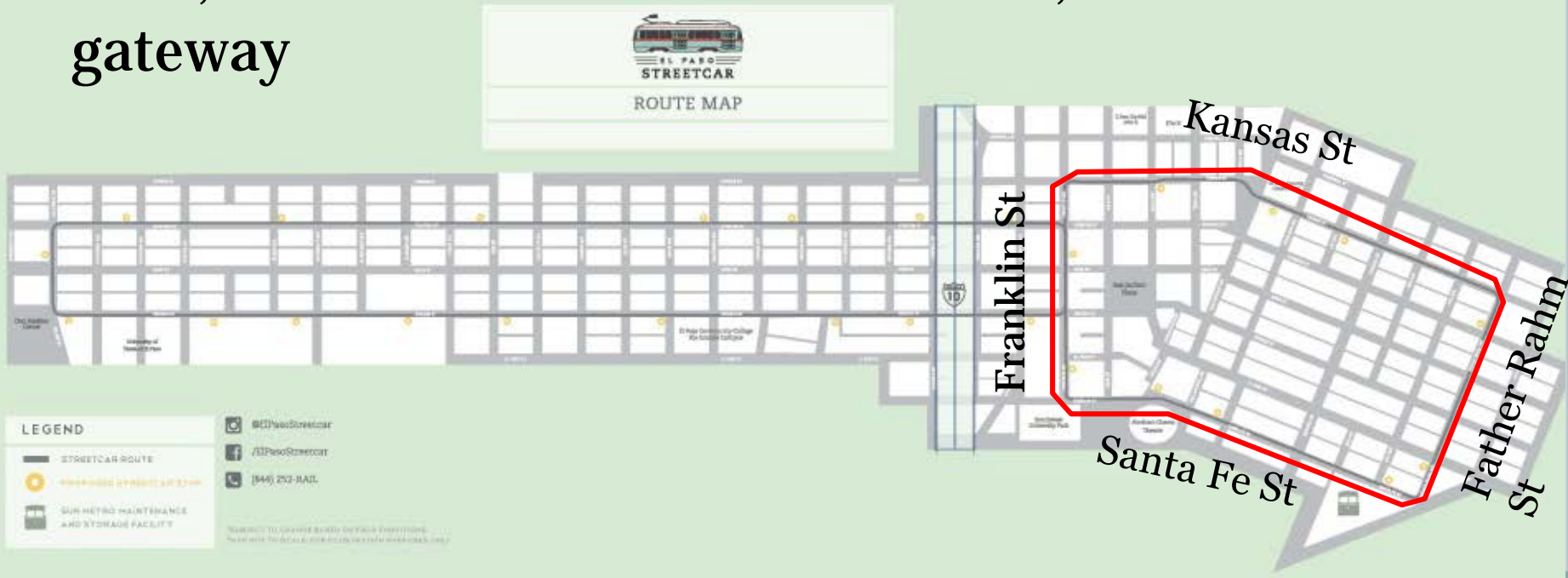
# EP Streetcar Project Overview



Two (2) adjoining Loops - 4.8 miles, 27 stops

## Downtown Loop

- CBD, Sun Metro DT Transfer Center, Paso del Norte gateway

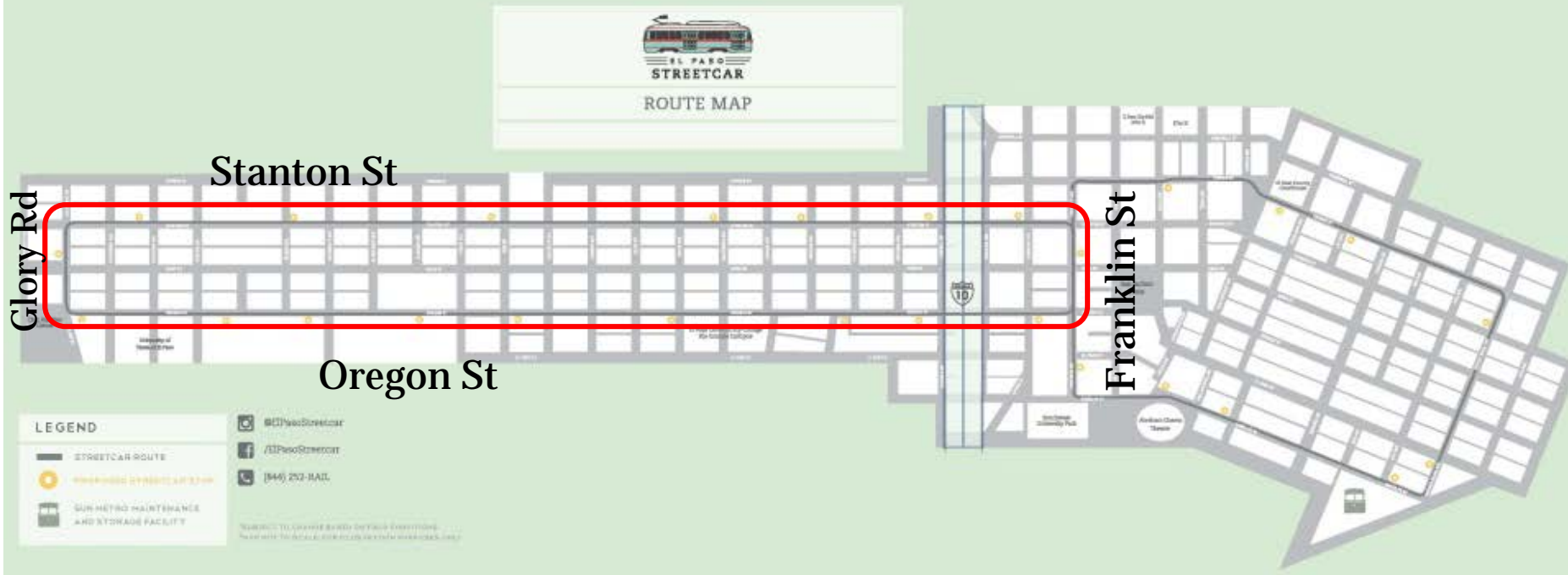


# EP Streetcar Project Overview

Two (2) adjoining Loops - 4.8 miles, 27 stops

## University Loop

- UTEP, El Paso CC, hospital district, entertainment





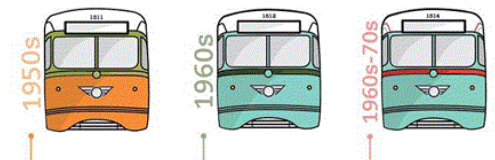
# EP Streetcar Project Overview

## Restoration of Historic Presidents' Conference Committee (PCC) Cars



- 6 of 7 City-owned PCC streetcars will be remanufactured and upgraded for modern use
- Transported to Brookeville, PA for remanufacture – August 2015

Presidents' Conference Committee (PCC) Cars



# EP Streetcar Project Overview



## New Maintenance and Storage Facility (MSF)



- Adjacent to existing Sun Metro DT Transfer Center
- Minutes from Paso Del Norte border crossing
- Capacity for 6 vehicles and future expansion
- Construction began - November 2015

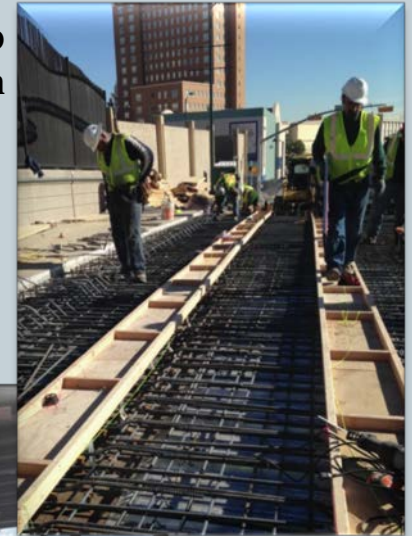
# EP Streetcar Project Overview



## Track and Electrification Systems Installation

- Phased construction by street
- Utility adjustments and OCS infrastructure installation began Dec -2015
- Rail arrival and installation began April – 2016
- Construction completion in late 2018
- Opening early 2019

Track slab  
installation



Electrical  
substation and  
transformer



# Challenges & Opportunities

## Challenges

- Significant relocation of existing utilities
  - \*Stanton St realignment to mitigate cost
- Long term roadway closures affecting businesses and stakeholders
- Coordination with adjacent projects

Maintain schedule and budget

## Opportunities

- 2-way bike facility
  - Using NACTO guidelines
- Kern Place Pedestrian Improvement Project
  - Sidewalks, pedestrian lighting, safety and ADA
  - Street furniture, art and bicycle amenities
  - Traffic calming



# Preliminary Lessons Learned

## \*Stanton Street Realignment

- Changed 20% of final design alignment to avoid costly utility relocation
- Negligible capital cost and schedule increase
- Minimal design fees
- Incorporated CoEP plans for adjacent bike facility

## Project Management & Public Involvement

- Early coordination with utility holders and affected stakeholders
- Integrated Implementation team of:
  - Owner / CM (CRRMA & CoEP),
  - Operator (Sun Metro)
  - Designer (AECOM)
  - Contractor (PDNT)
- Coordination of projects for shared benefits and cost / schedule savings



# Thank You



ANDREW ITTIGSON, AECOM  
ANDREW.ITTIGSON@AECOM.COM

